



**Expert
Plus 8**



RESIDENTIAL ELECTRIC WATER HEATERS
EXPERT PLUS – ECOPEAK®

60 IMP. GALLONS



Proudly
Canadian

Giant®
Enhancing everyday living

BENEFITS

1 - A SUSTAINABLE CHOICE

It lowers the collective electricity demand during peak periods.

2 - COMPARABLE BENEFITS

Price and energy consumption are comparable to those of traditional two-element water heaters. No difference in electricity costs for water heating and no impact on hot water availability. Less stress on electrical components, compared to traditional water heaters, extends service life and increases reliability.

3 - DOUBLE GLASS-LINED INNER TANK

A double coating of a uniquely formulated blue cobalt glass enriched with zircon is fused to specially treated steel at 1,600°F (871°C) to provide the best coating available against corrosion for many years. The tank is certified at a test pressure of 300 PSI (2,068 kPa) and a working pressure of 150 PSI (1,034 kPa).

4 - MEDIUM DENSITY SCREW-IN TYPE ELECTRIC ELEMENTS

This model is equipped with medium density screw-in elements. The 3,800W top element operates independently while the 3,000W middle element and the 800W* bottom element can work simultaneously.



5 - GREENFOAM® INSULATION UNIQUE TO GIANT

2 inch (5cm) thick uniform blanket of **GREENFOAM** eco-friendly insulation keeps the water hotter for longer periods, reduces stand-by losses and energy costs. **GREENFOAM** contains no HCFC's (hydrochlorofluorocarbons), CFC's (chlorofluorocarbons), nor VOC's (volatile organic compounds).

6 - FACTORY INSTALLED 3/4" NPT DI-ELECTRIC NIPPLES

Extend the life of the water heater by providing excellent corrosion protection.

7 - FACTORY INSTALLED HEAT TRAPS

Help reduce the migration of hot water, thus limiting heat loss escaping through inlet and outlet fittings.

8 - SUPPLIED INSTALLATION KIT

A temperature & pressure-relief valve, a 90° elbow overflow tube and a brass "T" are supplied with each Expert Plus water heater. The temperature & pressure-relief valve protects the tank from the damaging effects of excessive temperature and pressure.

9 - HIGH QUALITY MAGNESIUM ANODE

Provides superior corrosion prevention and extended tank life.

10 - BRASS DRAIN VALVE

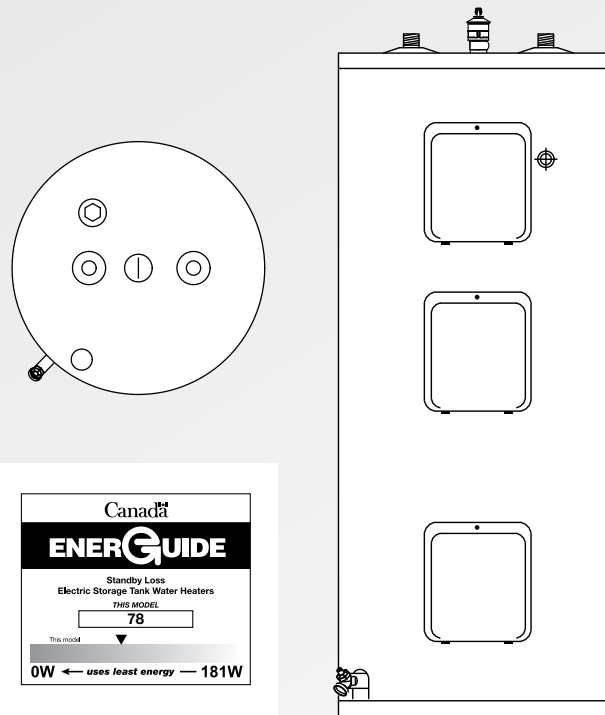
Tamper resistant brass drain valve is installed for easy drainage.

11 - AUTOMATIC TEMPERATURE CONTROL

Adjustable thermostats will provide years of reliable trouble-free service at the desired water temperature and a safety cut-off is provided for abnormal conditions.



The Choice of Experts!



SPECIFICATIONS & DIMENSIONS – 2" nominal **GREENFOAM** insulation

Models	Capacity			Input	Voltage	Standby loss	Diameter inches (cm)	Height inches (cm)	Weight lb (kg)
	U.S. (gal.)	Litres	Imp. (gal.)						
I72STPS-2S8M-E8	74	279	61	3,800 W	208 V	78	24 (61)	59 7/8 (152)	185 (84)
I72STPS-3S8M-E8	74	279	61	3,800 W	240 V	78	24 (61)	59 7/8 (152)	185 (84)

*800W low watt density.

Toxic chemicals, such as those used for boiler treatment, must NEVER be introduced into this system. This unit must NEVER be connected to any existing heating system or component(s) previously used with a non-potable water heating appliance.



Giant offers an EIGHT (8) year extended warranty against inner tank leakage from the date of installation for all Expert Plus residential electric water heaters. An EIGHT (8) year extended warranty is also offered on component parts. For more specific warranty details including exceptions, consult the Owner's manual provided with each water heater.

In accordance with our company policy of on-going product improvement, Giant Factories Inc. reserves the right to make changes without prior notice.



A family company since 1945.

40 Lesage Avenue, Montréal-East, Québec, Canada, H1B 5H3
 Telephone: 514 645-8893 • Toll free: 1 800 363-9354
 General fax: 514 640-0969
 Customer Service fax: 514 645-8413

www.giantinc.com