

Giant®

Enhancing everyday living

COMMERCIAL ELECTRIC WATER HEATERS

HEAVY DUTY MODELS

Available in 80 and 100 Imp. gallon capacities
(364 and 455 litres)

Standard voltage 208V, 240V, 480V & 600V
6 to 63 kW Input

**BUILT
TO LAST
LONGER**



AHRI
MEMBER



Giant WATER HEATERS ARE BUILT TO LAST LONGER

If durability, reliability, and versatility are the characteristics you are looking for in a water heater for your business, look no further than Giant's line of commercial electric water heaters. Our water heaters are specially designed with more steel, better grades (low carbon, low alloy) superior elements, and a wide range of inputs.

Giant commercial electric water heaters are ideally suited for most commercial and industrial applications. They have been designed for quick and easy installation as a replacement unit or as a new installation. These commercial electric water heaters can be installed as a single unit or as part of a multiple unit installation. Although used

primarily as a complete water heating system, they may be combined with Giant storage tanks for additional hot water capacity. All Giant commercial electric water heaters are design certified by CSA and are suitable for potable water.

OUTSTANDING TECHNICAL FEATURES

- **GLASS-LINED INNER TANK**

A uniquely formulated blue cobalt glass enriched with zircon is fused to specially treated steel at 1,600°F (871°C) to provide the best coating available against corrosion for many years. The tank is certified at a test pressure of 300 PSI (2,068 kPa) and a working pressure of 150 PSI (1,034 kPa).

- **HIGH DENSITY FIBERGLASS INSULATION**

Provides superior heat retention and energy efficiency while being environmentally friendly.

- **ELECTRIC ELEMENTS**

All models are equipped with CSA approved bolt-on resistor type immersion elements made by GIANT. These elements can be easily replaced with no special tools, resulting in low maintenance costs.

- **PATENTED TWIST-LOCK FLANGE**

Specially welded to the tank for longer tank life. TWIST-LOCK feature makes it easy to change the elements.

- **AUTOMATIC TEMPERATURE CONTROL**

Adjustable surface mounted thermostat(s) will provide years of reliable trouble-free service at the desired water temperature and an energy cut-off (E.C.O.) is provided for abnormal conditions.

- **FACTORY INSTALLED WIRING**

The junction box and elements are pre-wired at the factory eliminating the need for splicing and taping of wires.

- **FACTORY INSTALLED TERMINAL BLOCK**

Simplicity of installation. Just bring the service to the junction box and connect to the block.

- **HEAVY-DUTY CONTACTORS**

Installed to meet all anticipated loads and provide years of trouble-free service.

- **STANDARD VOLTAGES**

Flexibility of installation. Standard voltages are 208V, 240V, 480V, & 600V in single or three phases. Other voltages are available upon request.

- **SINGLE PANEL JUNCTION BOX**

Equipped with a hinged door that allows for easy access to all of the electrical components. The panel comes with a variety of knockout sizes ranging from 7/8" to 2 1/2" for ease of connection to all sizes of wiring.

- **REMOVABLE ELEMENT PANEL**

Allows direct access to the elements without opening the junction box.

- **DUAL HIGH QUALITY 1" DIAMETER MAGNESIUM ANODES**

Provide superior protection against the corrosive effects of water and extend tank life.

- **FACTORY INSTALLED 1" NPT DI-ELECTRIC NIPPLES**

Extend the life of the water heater by providing excellent corrosion protection.

- **DRAIN VALVE**

Excellent quality one-piece brass drain valve is installed for easy drainage.



THREE YEAR LIMITED WARRANTY

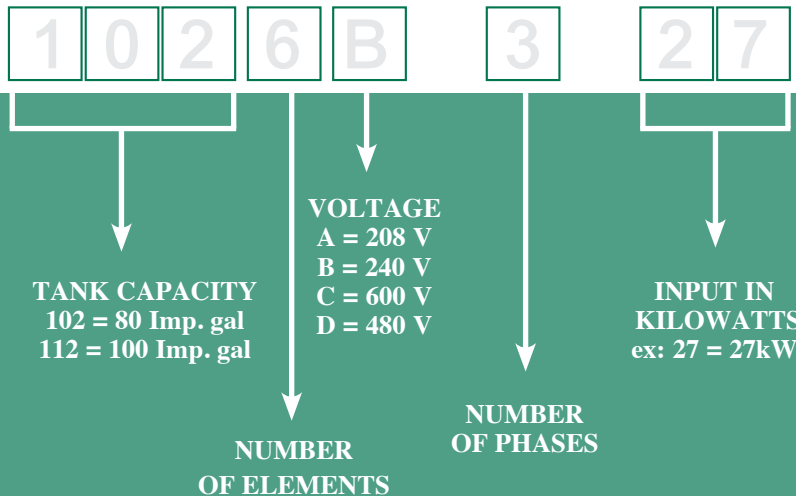
Giant commercial electric water heaters have a three (3) year limited warranty against inner tank leakage from the date of installation. One (1) year limited warranty on component parts. For more specific warranty details, consult the owner's manual provided with each water heater.

RECOVERY GPH/LPH AT VARIOUS TEMPERATURE RISES

Input		At 40°F (22°C)			At 60°F (33°C)			At 80°F (45°C)			At 100°F (56°C)			At 120°F (67°C)			At 140°F (78°C)		
kW	BTU	U.S. gal	L	Imp. gal	U.S. gal	L	Imp. gal	U.S. gal	L	Imp. gal	U.S. gal	L	Imp. gal	U.S. gal	L	Imp. gal	U.S. gal	L	Imp. gal
6	20,473	61	230	51	41	153	34	30	115	25	24	92	20	20	77	17	17	66	14
9	30,709	91	345	76	61	230	51	46	173	38	36	138	30	30	115	25	26	99	22
10	34,121	101	384	84	68	256	56	51	192	42	41	153	34	34	128	28	29	110	24
12	40,946	122	460	101	81	307	68	61	230	51	49	184	41	41	153	34	35	132	29
13.5	46,064	137	518	114	91	345	76	68	259	57	55	207	46	46	173	38	39	148	33
15	51,182	152	575	127	101	384	84	76	288	63	61	230	51	51	192	42	43	164	36
18	61,419	182	690	152	122	460	101	91	345	76	73	276	61	61	230	51	52	197	43
24	81,891	243	921	203	162	614	135	122	460	101	97	368	81	81	307	68	69	263	58
27	92,128	274	1,036	228	182	690	152	137	518	114	109	414	91	91	345	76	78	296	65
30	102,364	304	1,151	253	203	767	169	152	575	127	122	460	101	101	384	84	87	329	72
36	122,837	365	1,381	304	243	921	203	182	690	152	146	552	122	122	460	101	104	395	87
40.5	138,192	410	1,553	342	274	1,036	228	205	777	171	164	621	137	137	518	114	117	444	98
45	153,546	456	1,726	380	304	1,151	253	228	863	190	182	690	152	152	575	127	130	493	108
54	184,256	547	2,071	456	365	1,381	304	274	1,036	228	219	829	182	182	690	152	156	592	130
63	214,965	638	2,417	532	426	1,611	354	319	1,208	266	255	967	213	213	806	177	182	690	152

Table shows recovery rates with elements in simultaneous operation. For flip-flop operation, divide the recovery rates by two (2).

SAMPLE ORDERING:



Model designation must include storage capacity, number of elements, voltage, phases, and kilowatt input. When ordering, it is necessary to specify the complete model number.

SAMPLE SPECIFICATION

Electric water heater shall be a GIANT model # _____ with a _____ gallon/litre storage capacity, an input of _____ kW (BTU), a recovery rate of _____ GPH/LPH at 100°F (56°C) temperature rise, and be equipped for _____ volts, ___ phase operation. Tank(s) will have an industrial grade coating of a blue cobalt glass, insulated with two (2) inches environmentally friendly high density fiberglass and furnished with two (2) high quality one (1) inch diameter magnesium anodes. Tank shall have a working pressure rating of 150 PSI (1,034 kPa) and shall be design certified by CSA. Water heater shall be equipped with bolt-on resistor type immersion elements, surface mounted thermostats, manual reset high limit temperature controls, and an electrical junction box with a heavy duty terminal block. The installer shall supply and install an ASME rated temperature and pressure-relief valve. Water heater shall be covered by a three (3) year limited warranty against inner tank leakage.

In accordance with our company policy of on-going product improvement, Giant Factories Inc. reserves the right to make changes without prior notice.



40 Lesage Avenue, Montréal-East, Québec, Canada, H1B 5H3
 Telephone: 514 645-8893 Toll free: 1 800 363-9354
 General fax: 514 640-0969
 Customer Service fax: 514 645-8413
giantinc.com