

DISCONTINUED MODELS



STANDARD | Top entry

30 Imp. gallons

I42ETE-1S8M-E8
I42ETE-2S8M-E8
I42ETE-3S8M-E8

40 Imp. gallons

I52ETE-1S8M-E8
I52ETE-2S8M-E8
I52ETE-2S8M-E8EE

60 Imp. gallons

I72ETE-1S8M-E8
I72ETE-2S8M-E8
I72ETE-3S8M-E8
I72ETE-3S8M-E8CC
I72ETE-3S8M-E8AA
I72ETE-3S8M-E8OO

I.D.	Part #	Description	Use with models
1	TH3ZX006	Thermostat and high limit assembly	All
1a	TH3ZX001	High limit with manual reset	All
1b	TH3ZX002	Upper thermostat	All
2	18G0005	Screw-in element gaskets	All
3*	04G30/80 04G45/80	Upper screw-in element (240V)	142, 152 172
4	18G0020 5000028-A	Plastic drain valve Brass drain valve (since January 2012)	All
5	TH3ZX004	Lower thermostat	All
6	18G0011	Thermostat brackets	All
7	99000061-A	Element and thermostat access doors	All
8*	04G30/80 04G45/80	Lower screw-in element (240V)	142, 152 172
9	DT005280 22002281-A DT005410 22001406-A 22001525-A 22001526-A	Dip tube Dip tube with heat trap (since March 2011) Dip tube Dip tube with heat trap Dip tube Dip tube with heat trap	142ETE 142ETE 152ETE 152STE-HT 172ETE 172STE-HT
10	MS145280 MS145410 MS145510	Magnesium anode	142 152 172
11	NP022241 16000015-A 16001115-A	Outlet nipple Di-electric nipple 3/4" X 3 1/2" Di-electric nipple 3/4" X 3 1/2" with heat trap (since March 2011)	142, 152 172 152STE-HT, 172STE-HT, 142ETE
12	18G0022 SV0Z4220	Temperature and pressure relief valve	142, 152 152STE-HT, All 172
13	19000009-A	Overflow tube with (90°) elbow	All

* For 208V element, change 04Gxx /80 for 3AGxx /80

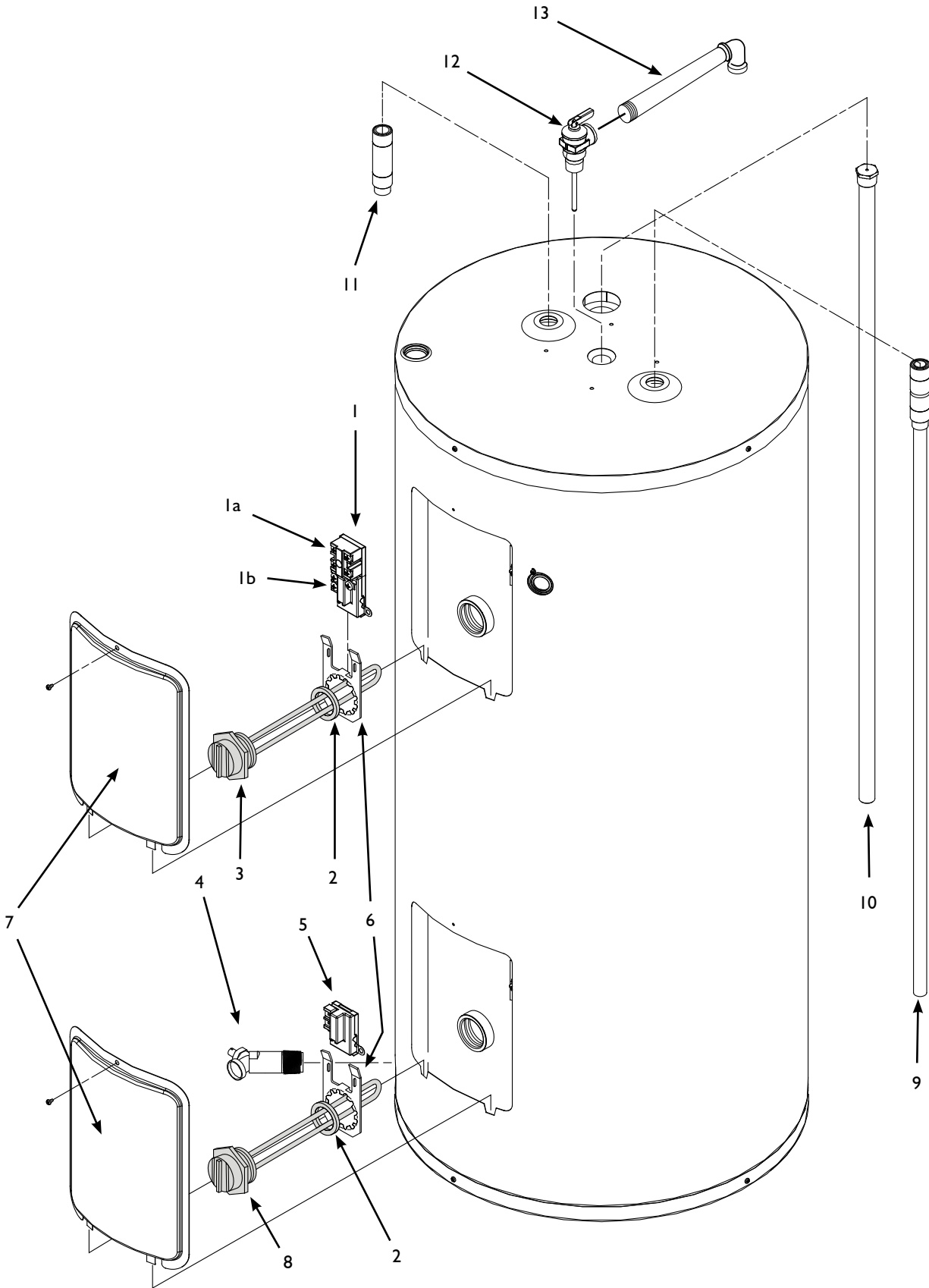
* For 120V element, change 04Gxx /80 for 03G15 /80



RESIDENTIAL ELECTRIC



DISCONTINUED MODELS



RESIDENTIAL ELECTRIC

Giant

May 2021