



# FLEXIBLE - Light, medium and heavy duty

208, 240, 277 & 480 Volts - 112 model with 3, 6 or 9 elements

COMMERCIAL ELECTRIC

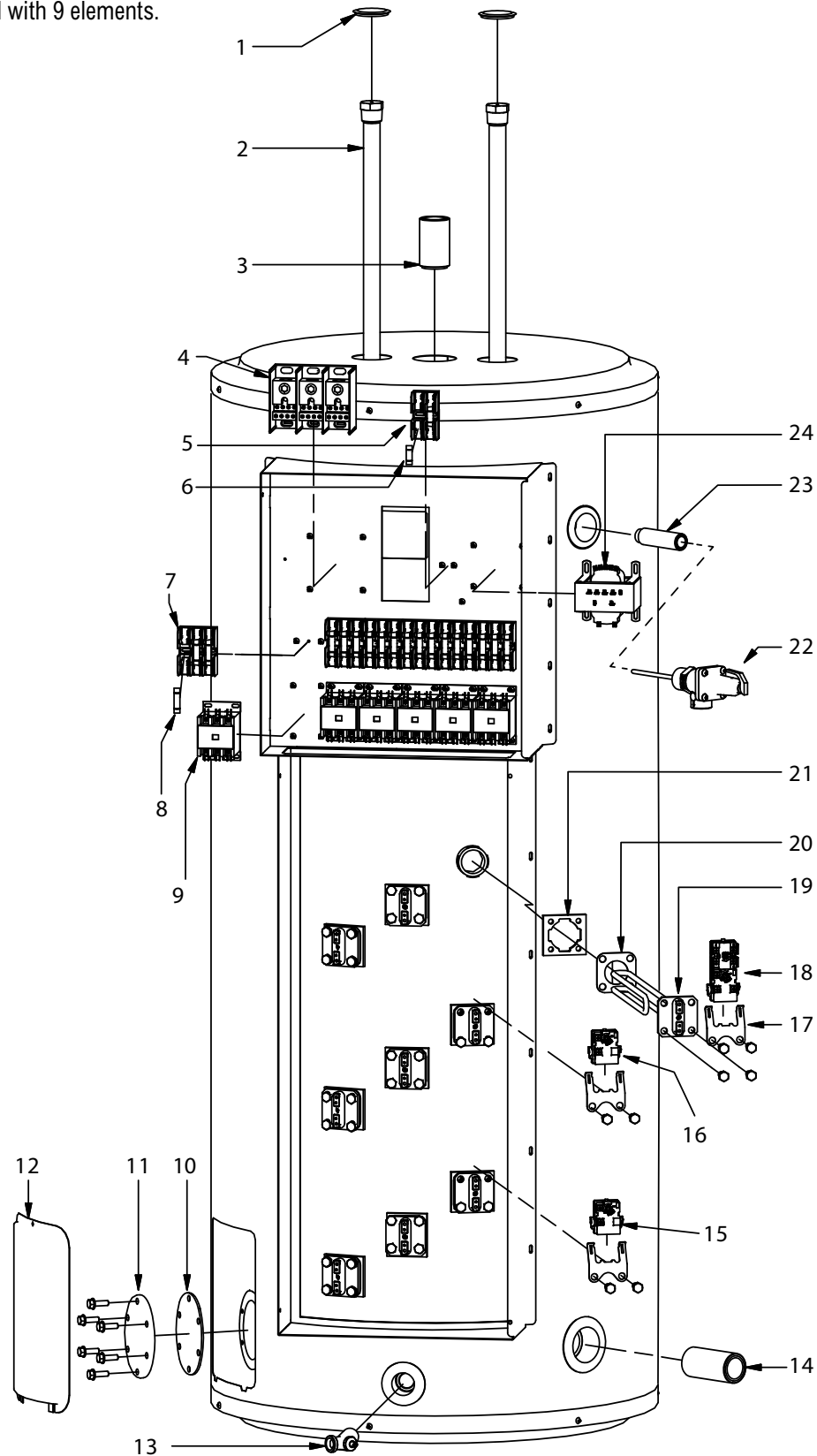
Giant

I.D.	Part #	Description	Use with models
1	87000014-A	Snap-in plug	All
2	MS166530	Magnesium anodes	112
3	16000008-A	Outlet nipple 1½" X 3"	All
4	32000008-A 32000007-A 32000009-A	Terminal block THREE (3) phases	All 3 elements All 6 elements All 9 elements
5	34001005-A	Fuse Holder (2P)	All
6	34000003-A	Fuses (3 amps Class G)	All
7	34001004-A	Fuse Holders (3P)	*US models
8	34000004-A	Fuses (30 amps Class G)	*US models
9	43000008-A	Contactors HCC-3XT02CY	All
10	25004111-A	Clean-out cover	All
11	GA1N1110	Clean-out gasket	All
12	99000061-A	Jacket door	All
13	DV3Z0070	Brass drain valve	All
14	16001402-A	Inlet nipple 1 ½" X 4"	All
15	56000018-A	Lower thermostat	All except 1123
16	56000018-A	Middle thermostat	1129 only
17	18G0001	Thermostat bracket	All
18	56000016-A	Combination thermostat / high limit	1126, 1129 top, 1123 bottom
19	SEE ELEMENT TABLE BELOW		
20	18G0002	Square flange element gasket	All
21	99001204-A	Twist-lock flange with screws	All
22	SV0N3020	Temperature and pressure relief valve	All
23	16000015-A	Relief nipple ¾" X 3 ½"	All
24	44000004-A	Transformer Multi-tap /120V	All

## SQUARE FLANGE ELEMENTS

Part #	Watts	Volts
9AG30/80	3,000 W	208V
9AG40/80	4,000 W	
9AG45/80	4,500 W	
9AG50/80	5,000 W	
10G30/80	3,000 W	240V
10G40/80	4,000 W	
10G45/80	4,500 W	
10G50/80	5,000 W	
10G60/80	6, W	277V
11G30/80	3,000 W	
11G40/80	4,000 W	
11G45/80	4,500 W	
11G50/80	5,000 W	
11G60/80	6,000 W	

Illustration shows 112 model with 9 elements.



\* Optional for Canadian Models



COMMERCIAL ELECTRIC

Giant