



FLEXIBLE - Light, medium and heavy duty

208, 240, 277 & 480 Volts - 105 & 108 models with 3, 6 or 9 elements

I.D.	Part #	Description	Use with models
1	87000014-A	Snap-in plug	All
2	MS155410 MS155520	Magnesium anodes	105 108
3	16000008-A	Outlet nipple 1 1/2" X 3"	All
4	32000008-A 32000007-A 32000009-A	Terminal block three phases	3 elements 6 elements 9 elements
5	34001005-A	Fuse Holder (2P)	All
6	34000003-A	Fuses (3 amps Class G)	All
7	34001004-A	Fuse Holders (3P)	*US models
8	34000004-A	Fuses (30 amps Class G)	*US models
9	43000008-A	Contactors HCC-3XT02CY	All
10	99001204-A	Twist-lock flange with screws	All
11	18G0002	Square flange element gasket	All
12	SEE ELEMENT TABLE BELOW		
13	56000016-A	Combination thermostat / high limit	All except 1053 & 1083
	56000022-A	High limit	1053 & 1083
14	GA1N1110	Clean-out gasket	All
15	25004111-A	Clean-out cover	All
16	99000061-A	Jacket door	All
17	18G0001	Thermostat bracket	All
18	DV3Z0070	Brass drain valve	All
19	56000018-A	Lower thermostat	1053 & 1083
20	16001402-A	Inlet nipple 1 1/2" X 4"	All
21	SV0N3020	Temperature and pressure relief valve	All
22	16000015-A	Relief nipple 3/4" X 3 1/2"	All
23	44000004-A	Transformer Multi-tap /120V	All

SQUARE FLANGE ELEMENTS

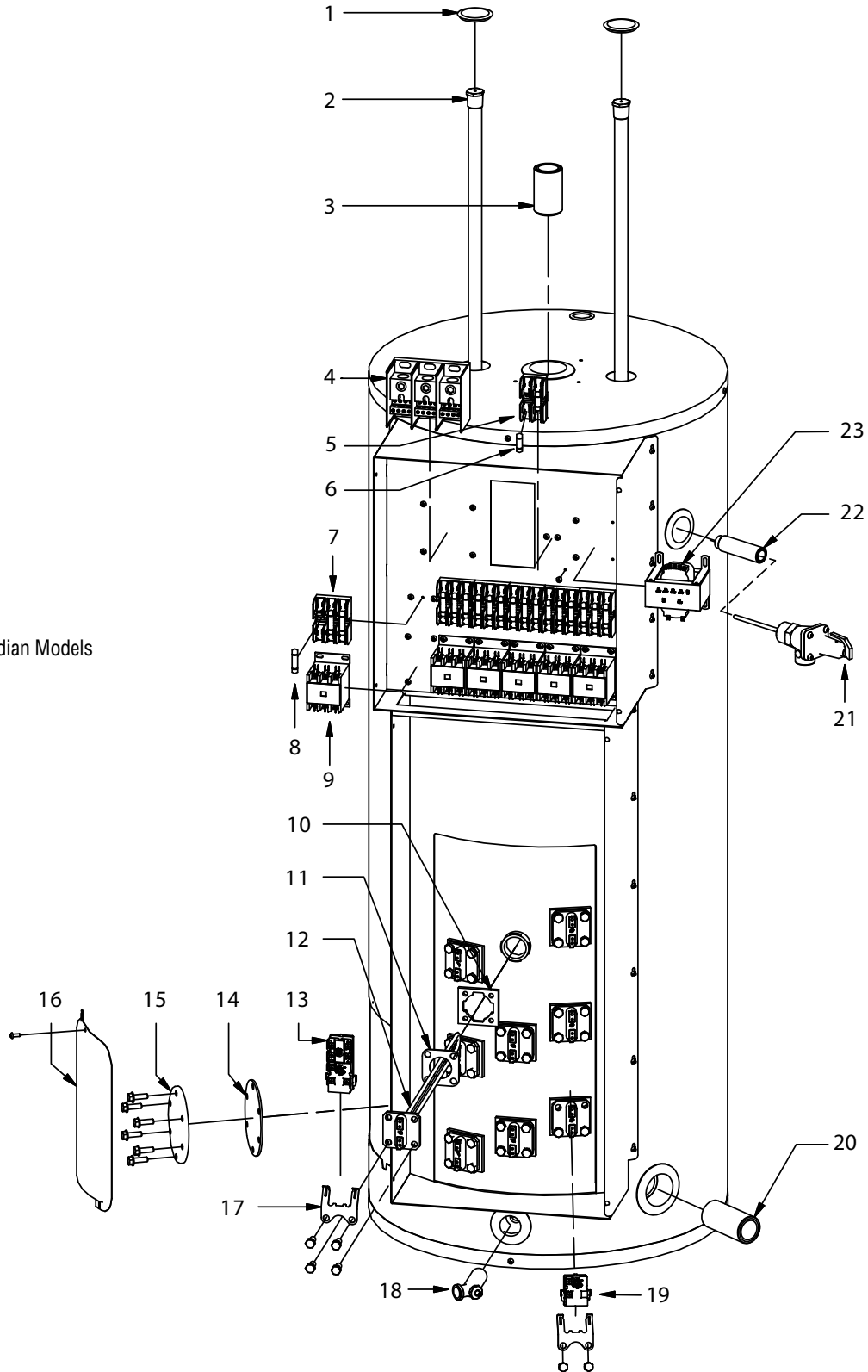
Part #	Watts	Volts
9AG30/80	3,000 W	208V
9AG40/80	4,000 W	
9AG45/80	4,500 W	
9AG50/80	5,000 W	
10G30/80	3,000 W	240V
10G40/80	4,000 W	
10G45/80	4,500 W	
10G50/80	5,000 W	
10G60/80	6,000 W	277V
11G30/80	3,000 W	
11G40/80	4,000 W	
11G45/80	4,500 W	
11G50/80	5,000 W	
11G60/80	6,000 W	

COMMERCIAL ELECTRIC

Giant

Illustration shows 108 model with 9 elements.

* Optional for Canadian Models



COMMERCIAL ELECTRIC

Giant